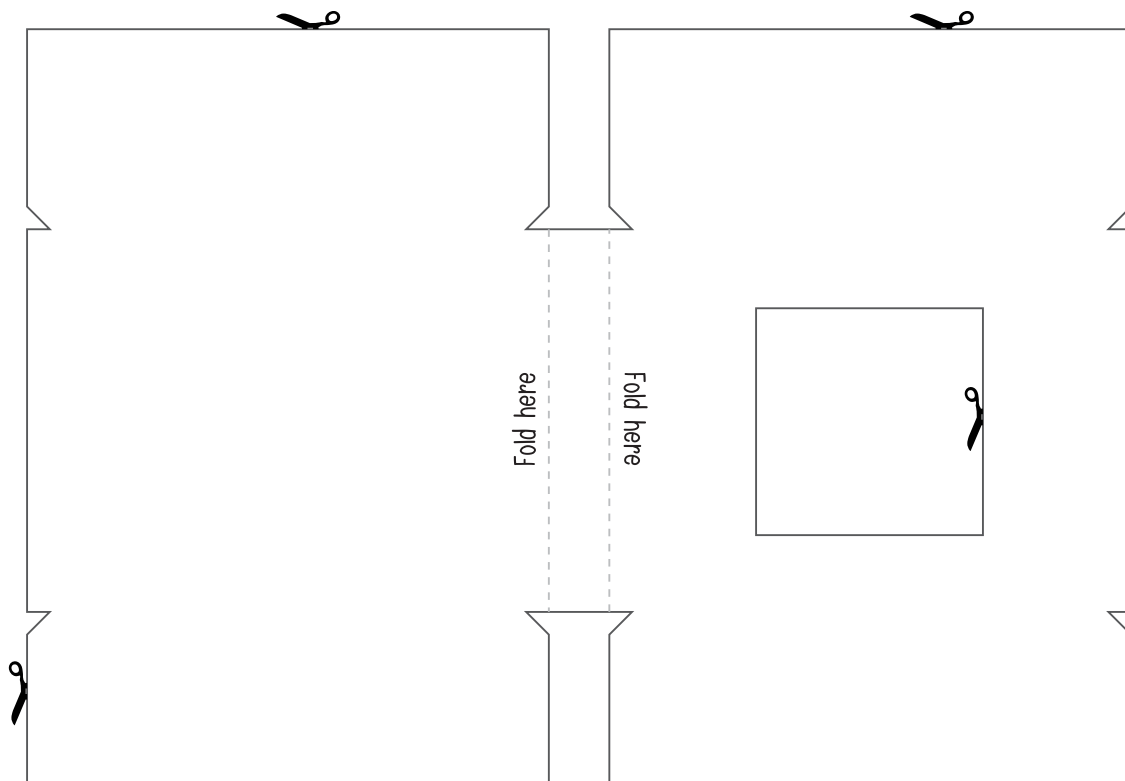


Instructions for Making a Card Holder

1. **Print the template** onto cardboard. (If you don't have cardboard for your printer, print the template onto paper, cut it out, then draw round it on the back of an old cereal box.)
2. **Cut out the template** carefully, including the window and the notches.
3. **Fold along the dotted lines**, so that the writing is on the inside.
4. **Find four elastic bands**, approx. 3mm x 50 mm. The bands need to be fairly tight across the cards.
5. On the side with the cut out window, put the **elastic bands horizontally** across the card.
6. On the other side, put the **elastic bands diagonally**.
7. You are now ready to **put cards into your Card Holder**.

Remember to print template 1:1 Scale or Actual Size!
Otherwise it will print too small.





Use the Card Holder to help you learn

The Card Holder is a handy way to manage the cards you are working on. Here's how.

Imagine you want to learn all the products from the 9x table.

1. **Find all the cards** with pink on them. These are all the cards in the 9x table. Put them in the RH side of the Card Holder, facing up.
2. **Choose one of these cards to learn.** Learn it the usual way, using your eyes and ears to help you (see instruction leaflet for more details.)
3. When you think you can remember the card, you are now **ready to place it on the LH side of the card holder**, under the elastic bands, with the product facing out through the window. You should be able to see the product but none of the factors.
4. **Test yourself!** Look at the product through the window. Can you say what the factors are? Shout out the factors then slide the card out to see if you are right.
5. When you are ready **pick another card from the RH side.** When you think you know it, place it on the LH side facing towards the window.

6. Now you can **test yourself on both products**. Look at the first product and shout out the factors. Then slide the card out by pushing on it in the window.

If the other card slides out behind it, tuck it back in so that you can only see the product in the window. As you practice you will get good at only pulling one card out at a time.

7. Gradually, as you learn the cards, you will move them all from the RH side to the LH side. When there are no more cards on the RH side, **celebrate!** Then choose new cards to learn.

**Remember! Brains have a habit of forgetting.
so keep testing yourself on all the products you think you know**

